

BioAim Scientific Inc

Human Alpha 2-M ELISA Kit

Cat.No: 3010224

Instruction Manual (Last revised Jan 24, 2017)

For research use only

TABLE OF CONTENTS

I. INTRODUCTION.....	3
II. MATERIALS SUPPLIED.....	4
III. STORAGE.....	4
IV. ADDITIONAL MATERIALS REQUIRED.....	4
V. PRECAUTIONS.....	5
VI. REAGENT PREPARATION.....	5
VII. ASSAY PROCEDURE.....	7
VIII. CALCULATION OF RESULTS.....	8
IX. PERFORMANCE	9
X. TROUBLESHOOTING.....	11

I. INTRODUCTION

The Bioaim Human Alpha 2-M ELISA kit is a solid phase sandwich ELISA (enzyme-linked immunosorbent assay) for the quantitative measurement of Alpha 2-M in human serum, plasma and cell culture media. An antibody specific for human Alpha 2-M was coated on a 96-well plate. Standards and samples are added to the wells and any Alpha 2-M present binds to the immobilized antibody. The wells are washed and biotinylated anti-human Alpha 2-M antibody is added. After washing away unbound biotinylated antibody, HRP-conjugated streptavidin is added to the wells. The wells are again washed and TMB substrate solution is added, which produces a blue color in direct proportion to the amount of Alpha 2-M present in the initial sample. The Stop Solution changes the color from blue to yellow, and the microwell absorbances are read at 450 nm.

II. REAGENTS

1. Human Alpha 2-M Microplate: 96 breakable wells (12strips x 8wells) coated with anti-human Alpha 2-M.
2. 20x Wash Buffer Concentrate: 1 Vial, 25 ml.
3. 5x Assay Diluent: 1vial, 15 ml.
4. Standards: 2 vials, recombinant human Alpha 2-M.
5. Detection Antibody: 2 vials, biotinylated anti-human Alpha 2-M.
6. HRP-Streptavidin Concentrate: 1vial.
7. TBM Substrate solution: 1 Vial, 12 ml.
8. Stop Solution: 1 Vial, 8 ml.

III. STORAGE

1. The entire kit may be stored at -20°C for up to 1 year from the date of shipment. For extended storage, it is recommended to store at -80°C. The kit can be stored for up to 6 months at 2° to 8°C from the date of shipment.
2. Standard can be stored at -20 °C or -80 °C. Use freshly prepared standard within 12hours (stored at 2~8 °C).
3. Opened Microplate Wells or reagents may be stored for up to 1 month at 2 to 8 °C. Return unused strips to the pouch containing desiccant pack, reseal along entire edge and keep in 2~8 °C.
4. Avoid repeated freeze-thaw cycles.

IV. ADDITIONAL MATERIALS REQUIRED

1. Distilled or deionized water.
2. Precision pipettes, with disposable plastic tips.
3. Beakers, flasks, cylinders necessary for preparation of reagents.
4. Microplate washing device (multichannel pipette or automated microplate washer).
5. Microplate shaker.
6. Microplate reader capable of reading at 450 nm.

V. PRECAUTIONS

1. All reagents must be at room temperature (18 °C to 25 °C) before running assay.
2. Do not mix or substitute reagents with those from other lots or other sources.
3. Do not use kit reagents beyond expiration date on label.
4. Do not expose kit reagents to strong light during storage or incubation.
5. Use disposable pipette tips for each transfer to avoid microbial contamination or cross contamination of reagents.
6. Improper or insufficient washing at any stage of the procedure will result in either false positive or false negative results.
7. Avoid contact of stop solution with skin or eyes. If contact occurs, immediately flush area with copious amounts of water.
8. Do not use TMB substrate solution if it has begun to turn blue.
9. Do not expose bleach to work area during actual test procedure because of potential interference with enzyme activity.

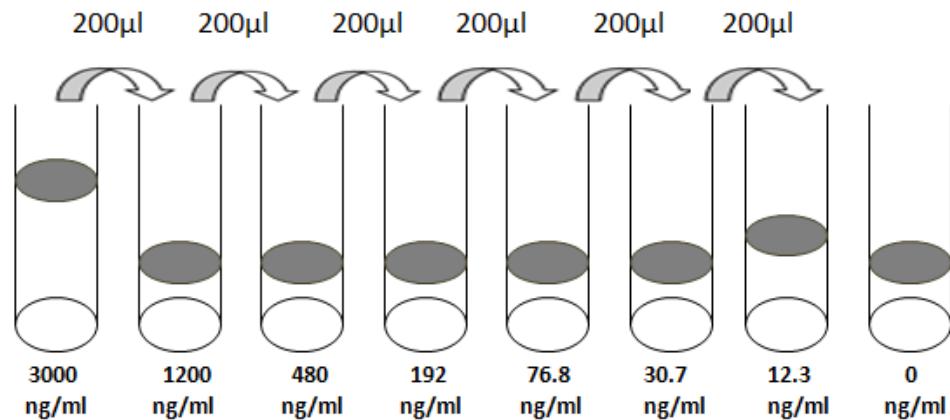
VI. REAGENT PREPARATION

1. Bring all reagents and samples to room temperature (18~25°C) before use.
2. **Assay diluent**
Dilute the concentrated assay diluent 1:5 with distilled water (e.g. 10ml plus 40ml).
3. **Wash Buffer**
Dilute the concentrated wash buffer 1:20 with distilled water (e.g. 20ml plus 380ml).
4. **Sample**
Levels of the target protein may vary among different specimens. Optimal dilution factors for each sample must be determined by the investigator.

The dilution scheme is only suggestion: the recommended dilution for serum and plasma is 1:2000.

5. Standard

- Briefly spin standard vial before use. Add 500 μl 1x Assay Diluent to prepare a 3000ng/ml standard. Gently vortex to mix.
- Add 300 μl 1x Assay Diluent to 7 tubes. Label as 1200ng/ml, 480ng/ml, 192ng/ml, 76.8ng/ml, 30.7ng/ml, 12.3ng/ml and the last tube with 1x assay diluent is the blank as 0ng/ml.
- Perform serial dilutions by adding 200 μl of each standard to the next tube and vortexing between each transfer (see figure below).



6. Detection Antibody

Briefly spin the Detection Antibody vial before use. Add 100 μl of 1X Assay Diluent into the vial to prepare a detection antibody concentrate. The detection antibody concentrate should be diluted 80-fold with 1X Assay Diluent and used in step 5 of Part VII Assay Procedure.

7. HRP-Streptavidin concentrate

Briefly spin the HRP-Streptavidin concentrate vial and pipette up and down to mix gently before use. HRP-Streptavidin concentrate should be diluted 700-fold with 1X Assay Diluent.

For example: Add 20 µl of HRP-Streptavidin concentrate into a tube with 14 ml 1X Assay Diluent to prepare a final 700 fold diluted HRP-Streptavidin solution. Mix well.

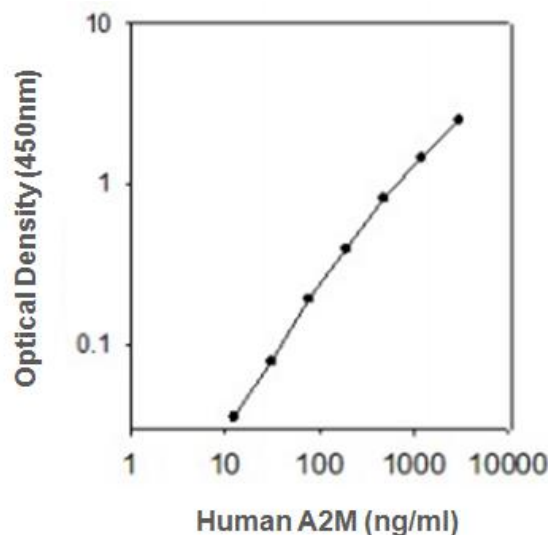
VII. ASSAY PROCEDURE

1. All reagents must be brought to room temperature (18-25°C) prior to use. It is recommended that all samples, standards, and blanks be run in duplicate.
2. Remove required quantity of test strips/wells, place in well holder.
3. Add 100 µl of each standard (*see Reagent Preparation step 5*) and sample into appropriate wells. Cover well and incubate for 2.5 hours at room temperature or over night at 4°C with gentle shaking.
4. Decant or aspirate contents of wells. Wash wells by filling with at least 300 µl/well prepared wash buffer followed by decanting/aspirating. Soak wells in wash buffer for 30 seconds to 1 minute for each wash. Repeat wash 4 times for a total of 5 washes. After the last wash, blot plate on absorbent paper to remove residual buffer. Thorough washing at this step is very important, complete removal of liquid is required for proper performance.
5. Add 100 µl of 1X prepared biotinylated antibody (*Reagent Preparation step 6*) to each well. Incubate for 1 hour at room temperature with gentle shaking.
6. Discard the solution. Repeat the wash as in step 4.
7. Add 100 µl of prepared Streptavidin solution (*see Reagent Preparation step 7*) to each well. Incubate for 45 minutes at room temperature with gentle shaking.
8. Discard the solution. Repeat the wash as in step 4.

9. Add 100 μ l of TMB One-Step Substrate Reagent to each well. Incubate for 30 minutes at room temperature in the dark with gentle shaking.
10. Add 50 μ l of Stop Solution to each well. Read at 450 nm immediately. Read absorbance at 450nm within 30 minutes of stopping reaction. If wavelength correction is available, subtract the optical density readings at 570nm from readings at 450nm.

VIII.CALCULATION OF RESULTS

1. Calculate the average absorbance values for each set of duplicate standards, samples and controls. Subtract the average zero standard optical density.
2. Create a standard curve by plotting the mean absorbance for each standard concentration on the ordinate against the Alpha 2-M concentration on log-log graph paper or using Sigma plot software. Draw a best fit curve through the points of the graph.
3. To determine the concentration of circulating Alpha 2-M for each sample, first find the mean absorbance value on the ordinate and extend a horizontal line to the standard curve. At the point of intersection, extend a vertical line to the abscissa and read the corresponding Alpha 2-M concentration.
4. Computer-based curve-fitting statistical software may also be employed.
5. A representative standard curve is shown below. This standard curve is for demonstration only. A standard curve must be run with each assay by operator.



IX. PERFORMANCE CHARACTERISTICS

A. Sensitivity

The minimum detectable dose of human Alpha 2-M was determined to be 5ng/ml. This is defined as two standard deviations above the mean optical density of 20 replicates of the zero standards.

B. Recovery

Recovery was determined by spiking various levels of human Alpha 2-M into the diluted sample types listed below. Mean recoveries are as follows:

Sample Type	Average % Recovery	Range %
Serum	118	97-132
Plasma	115	96-123
Cell culture media	105	89-122

C. Linearity

Sample	Dilution	% of expected
Seum	1:2	120
	1:4	123
	1:8	121
Plasma	1:2	116
	1:4	121
	1:8	117
Cell culture media	1:2	125
	1:4	130
	1:8	127

D. Specificity

This ELISA antibody pair detects only human Alpha 2-M. Other species not determined.

E. Reproducibility

Intra-Assay CV%: <10%

Inter-Assay CV%: <12%

X. Troubleshooting

Problem	Cause	Solution
1. Poor standard curve	1. Inaccurate pipetting 2. Improper standard dilution	1. check pipettes; 2. Ensure briefly spin the vial of standard, take the right amount to dilution.
2. Low signal	1. Too brief incubation time 2. Inadequate reagent volumes or improper dilution	1. ensure adequate incubation time; 2. Check pipettes and ensure corrected preparation.
3. Large CV	Inaccurate pipetting	1. Check pipettes; 2. Accurately perform each step.
4. High background	1. Plate is insufficiently washed; 2. Wash buffer contamination	1. Follow the manual correctly; if using a plate washer, check that all ports are working functionally; 2. Prepare fresh buffer.
5. Low sensitivity	1. ELISA kit improper storage 2. Stop solution	1. Follow the manual to store each component correctly; 2. Add enough stop solution to each well.

Bioaim Scientific Inc

Unit 6, 27 Casebridge Court
Scarborough, ON, M1B 4Y4
Canada
Tel: 416-286-6868
www.bioaimscientific.com